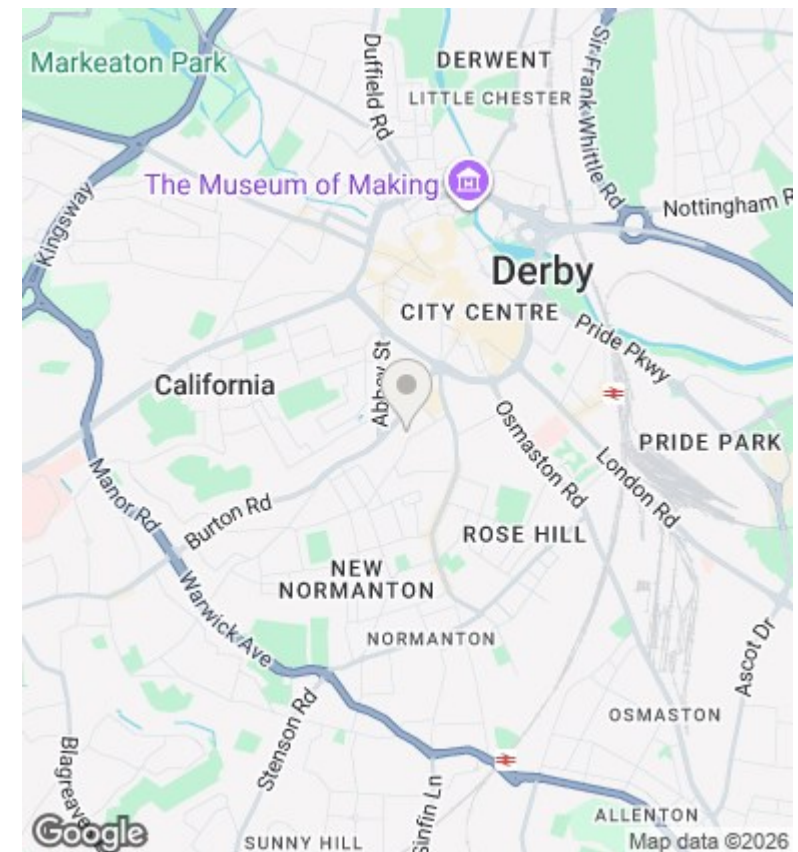
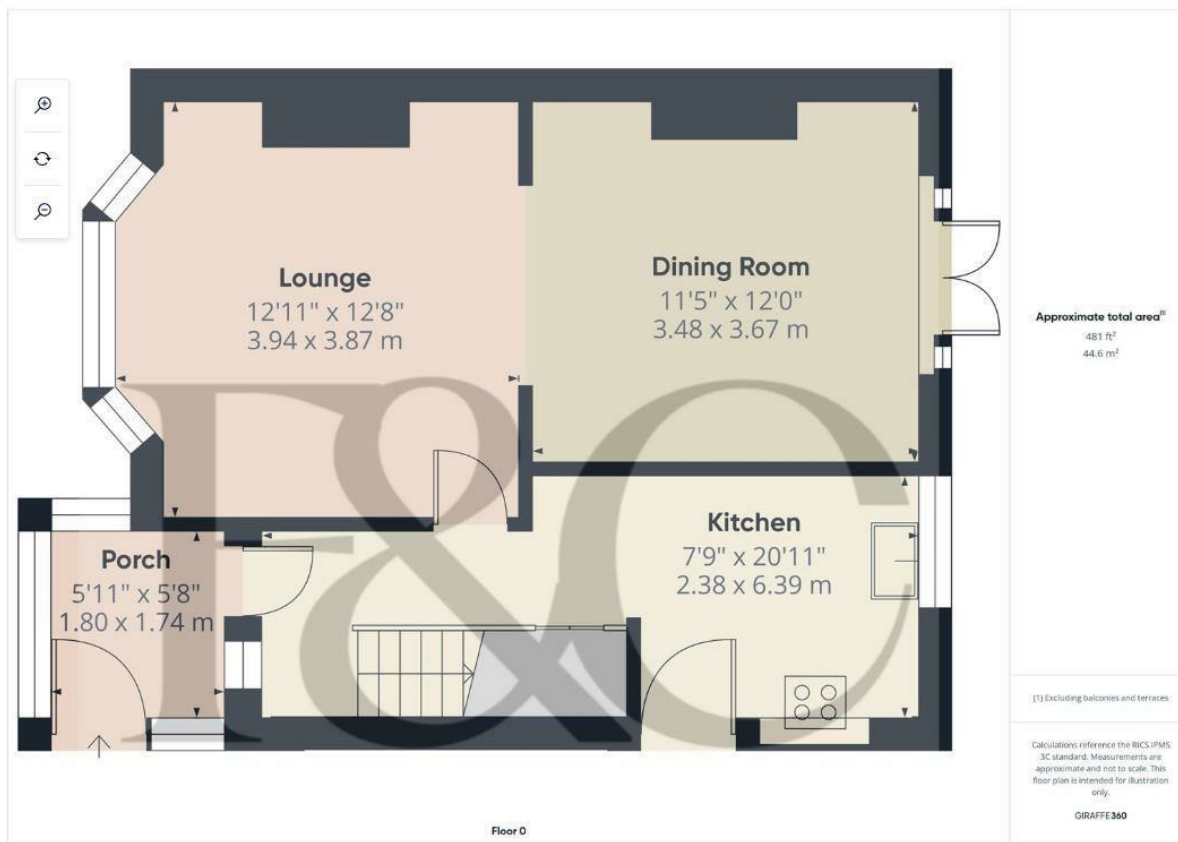




16 Lime Avenue, Derby, DE1 1TU

£1,300 Per Calendar Month

- Bay Fronted, Semi-Detached Property
- Extensive Driveway to Front With EV Charging Point
- Unfurnished/Furnished
- Close to Excellent Amenities, The Royal Derby Hospital, Rolls Royce & City Centre
- Porch & Entrance Hall
- Quiet Cul-de-Sac Location
- Three First Floor Bedrooms & Bathroom
- Refitted Kitchen With Integrated Appliances
- Superbly Presented Throughout
- Well-Screened from the Road



Directions

Viewings

Viewings by arrangement only. Call 01332 910111 to make an appointment.

Council Tax Band

B

EPC Rating:

D

Energy Efficiency Rating		
	Current	Potential
Very energy efficient - lower running costs		
(92-plus) A		
(81-91) B		87
(69-80) C		
(55-68) D	66	
(39-54) E		
(21-38) F		
(1-20) G		
Not energy efficient - higher running costs		
England & Wales		EU Directive 2002/91/EC